

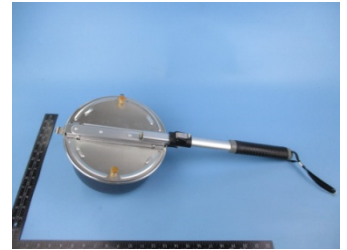


# TEST REPORT

Test Report # R-us4-16400613-E Date of Report Issue: December 2, 2016  
 Date of Sample Received: November 23, 2016 Pages: Page 1 of 8

### CLIENT INFORMATION:

Company: HANGZHOU NEW LINE CO.,LTD  
 Address: RM.1004,10<sup>TH</sup> FLOOR,RED STONE CENTRAL BLDG.,NO.225 CHAOWANG ROAD, HANGZHOU, ZHEJIANG



### SAMPLE INFORMATION:

Product Name: POPCORN MAKER  
 Model/style No.: -  
 Main Material: aluminium  
 Buyer: -  
 Supplier: -  
 Country of Distribution: US  
 Testing Period: 11/23/2016-12/02/2016

### OVERALL RESULT:

**PASS**

Refer to page 2 for test result summary and appropriate notes.

HANGZHOU ASIAINSPECTION TECHNOLOGY CO., LTD

HANGZHOU ASIAINSPECTION TECHNOLOGY CO., LTD

Hanker Xu  
Operation Manager

Kevin Lee  
Technical Manager





# TEST REPORT

Test Report # R-us4-16400613-E Date of Report Issue: December 2, 2016  
Date of Sample Received: November 23, 2016 Pages: Page 2 of 8

---

## TEST RESULTS SUMMARY:

At the request of the client, the following tests were conducted:

| CONCLUSION | TEST(S) CONDUCTED                                                                                          |
|------------|------------------------------------------------------------------------------------------------------------|
| PASS       | US FDA 21 CFR 175.300(c)--Extraction test                                                                  |
| PASS       | U.S.FDA CPG 7117.05 Food and Drug Administration Regulations Silver-Plated Hollowware - Lead Contamination |





**DETAILED RESULTS:**

**US FDA 21 CFR 175.300: Resinous and polymeric coatings.**

Condition of use : A. High temperature heat-sterilized(e.g., over 212 °F).

| Product name: 1                |                      |                           |                 |        |
|--------------------------------|----------------------|---------------------------|-----------------|--------|
| Parameter                      | Unit                 | Maximum permissible Limit | Detection Limit | Result |
| Distilled water, 250°F /2hours | mg/inch <sup>2</sup> | 18                        | 0.10            | ND     |
| N-heptane, 150°F /2hours       | mg/inch <sup>2</sup> | 18                        | 0.10            | 0.11   |
| 8% alcohol, 250°F /2hours      | mg/inch <sup>2</sup> | 18                        | 0.10            | ND     |
| <b>Conclusion</b>              | -                    |                           |                 | PASS   |

Note:

- 1) °F =degree fahrenheit; mg/inch<sup>2</sup>=micrograms per square inch
- 2) ND=Not Detected(<Detection Limit)

USA CFR 175.300 (c) Requirements:

| Extractant      | For repeated used       | Volume is less/more than a gallon for one-time used |
|-----------------|-------------------------|-----------------------------------------------------|
| Distilled water | 18 mg/inch <sup>2</sup> | 0.5/1.8 mg/inch <sup>2</sup>                        |
| N-heptane       | 18 mg/inch <sup>2</sup> | 0.5/1.8 mg/inch <sup>2</sup>                        |
| 8% alcohol      | 18 mg/inch <sup>2</sup> | 0.5/1.8 mg/inch <sup>2</sup>                        |





**DETAILED RESULTS:**

**U.S.FDA CPG 7117.05: Silver-Plated Hollowware - Lead Contamination**

Test method : The test is performed according to ASTM C738, followed by analysis using AAS.

| Product name: 1   |       |                 |               |
|-------------------|-------|-----------------|---------------|
| Sample No.        | Unit  | Detection Limit | Result (Lead) |
| 1                 | µg/ml | 0.10            | ND            |
| 2                 | µg/ml | 0.10            | ND            |
| 3                 | µg/ml | 0.10            | ND            |
| 4                 | µg/ml | 0.10            | ND            |
| 5                 | µg/ml | 0.10            | ND            |
| 6                 | µg/ml | 0.10            | ND            |
| average           | µg/ml | 0.10            | ND            |
| Limit             | µg/ml | --              | 7             |
| <b>Conclusion</b> | --    |                 | <b>PASS</b>   |

U.S.FDA CPG 7117.05 Requirements:

| Type                                     | n | Permissible limit    | Unit  | Limit |
|------------------------------------------|---|----------------------|-------|-------|
| intended for use by adults               | 6 | average<limit        | µg/ml | 7     |
| intended for use by infants and children | 6 | all specimens <limit | µg/ml | 0.5   |

Note:

- 1) µg/ml =microgram per milliliter
- 2) ND=Not Detected(<Detection Limit)
- 3) n=the number of specimens in the sample under test.





**SPECIMEN DESCRIPTION:**

| Sample No.& Name | Specimen No. | Specimen Description | Location |
|------------------|--------------|----------------------|----------|
| 1 POPCORN MAKER  | -            | -                    | -        |





**SAMPLE PHOTO:**





**SAMPLE PHOTO:**





**SAMPLE PHOTO:**



-End Report-

